



Light efficiency:



Light quality:



Color temperature:

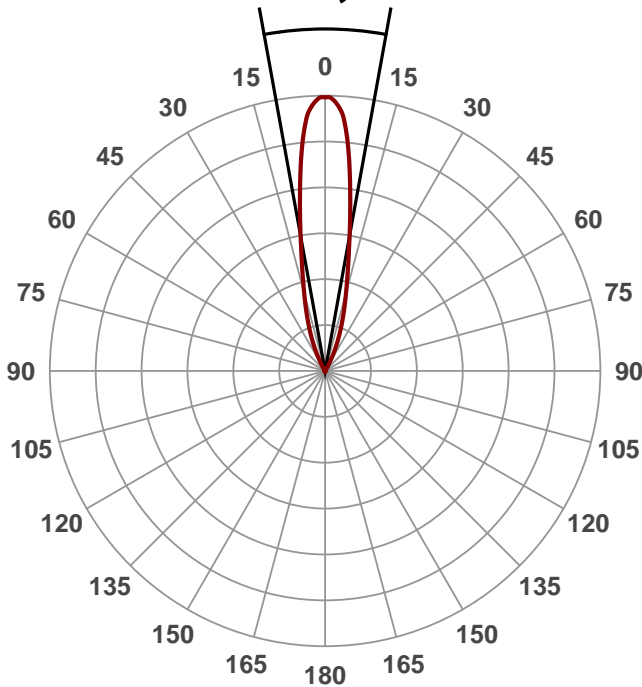


Output: 2873 lm
Peak: 13331 cd
Power: 32,9 W
PF: 0,91



Beam angle

20,5°



Product name:
ZLRS-1532-3020

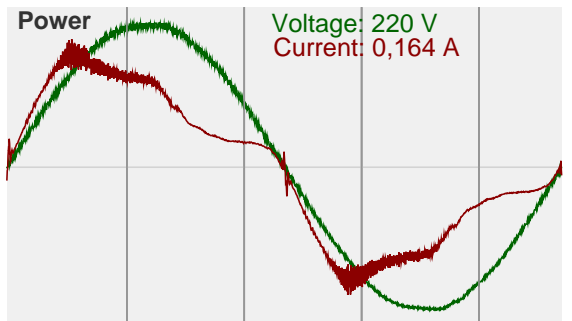
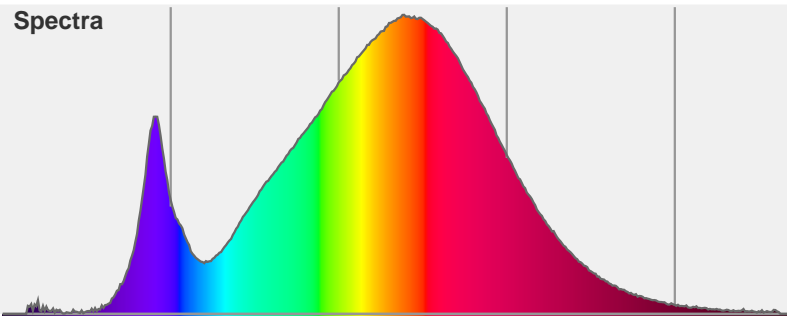
Date and time:
1.9.2015 14:48:20

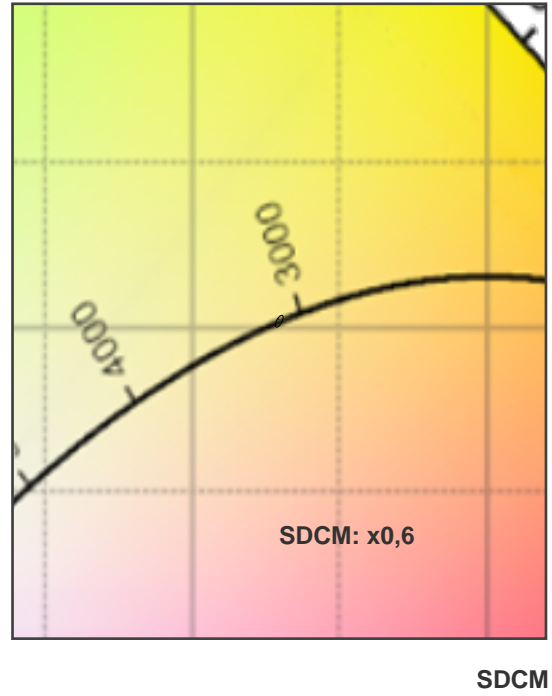
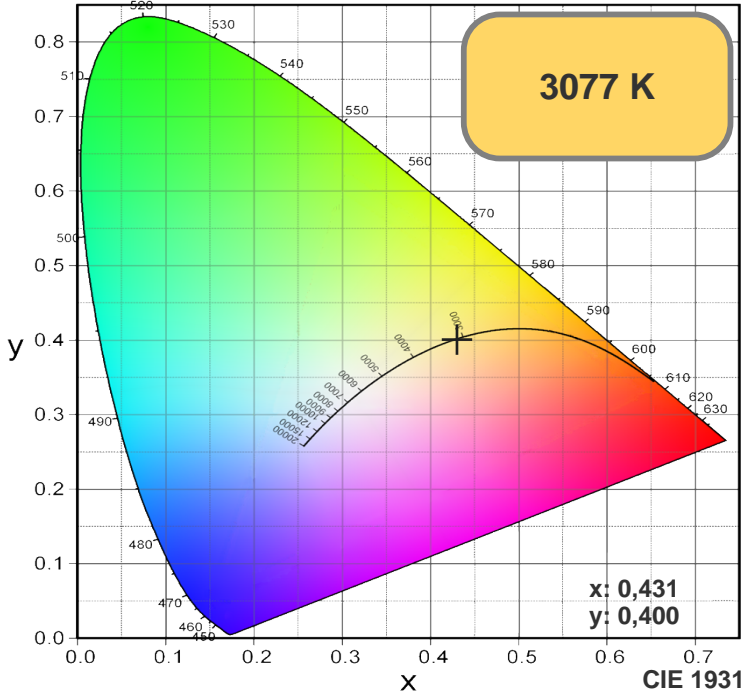
Color



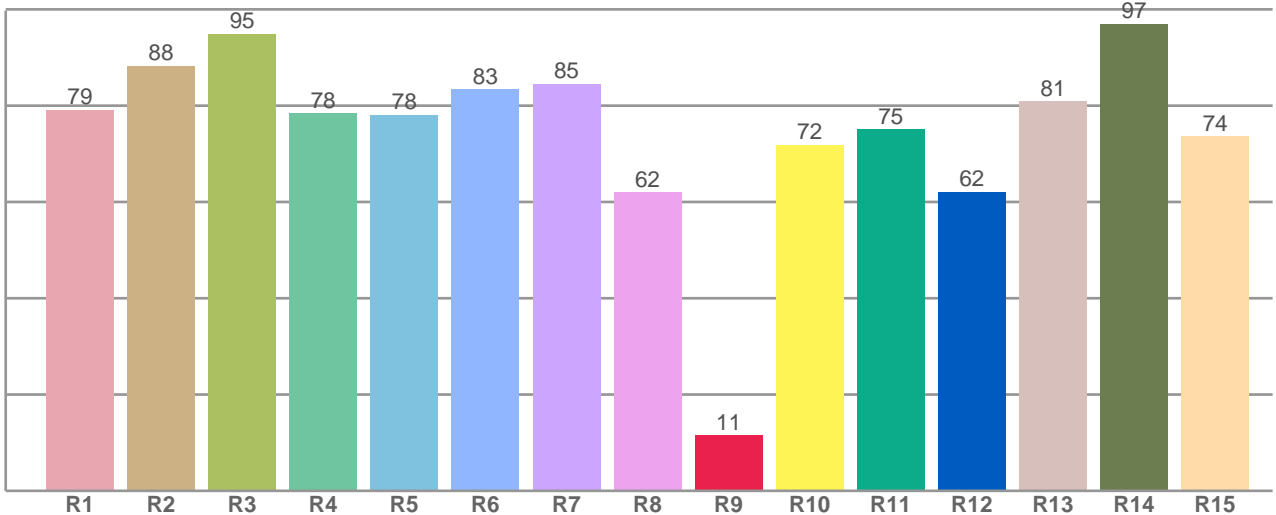
CIE1931
x: 0,431
y: 0,400

Spectra





R1-R8 = CRI: 81,1



R1	R2	R3	R4	R5	R6	R7	R8	R9	R10	R11	R12	R13	R14	R15
79,07	88,25	94,90	78,37	78,05	83,38	84,53	61,98	11,48	71,84	75,01	62,05	80,89	96,95	73,55

Color parameters

Chromaticity coordinates: x=0,431 y=0,400 u'=0,248 v'=0,346
Color temperature: 3077 Kelvin