



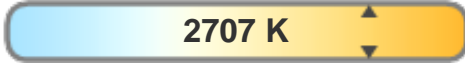
Light efficiency:



Light quality:



Color temperature:

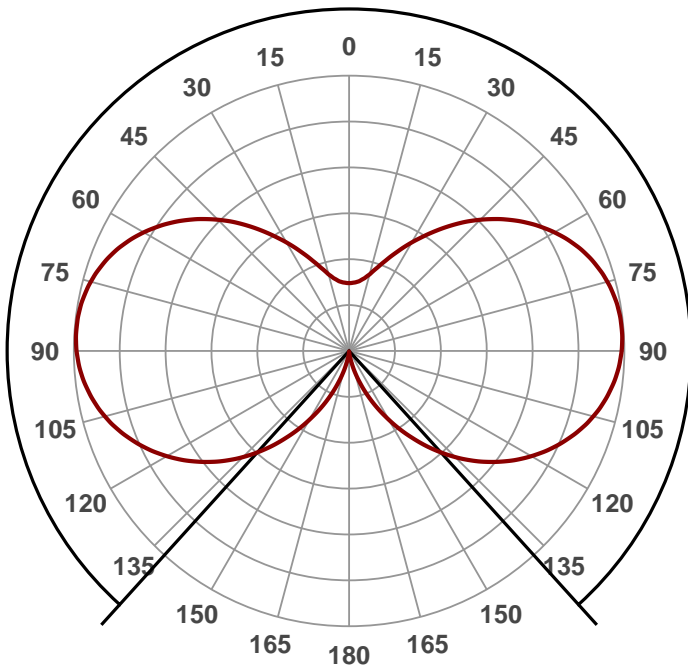


Output: 287 lm
Peak: 31,2 cd
Power: 2,8 W
PF: 0,48



Beam angle

275,7°



Product name:
ZLFA-E14-C35T-30S350

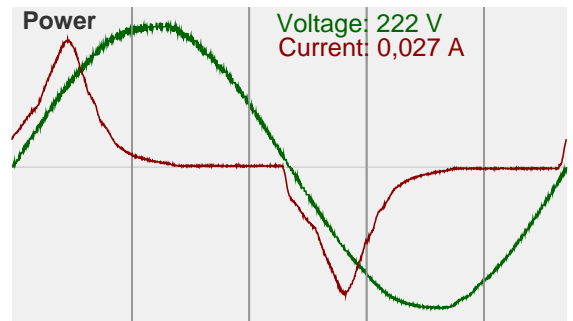
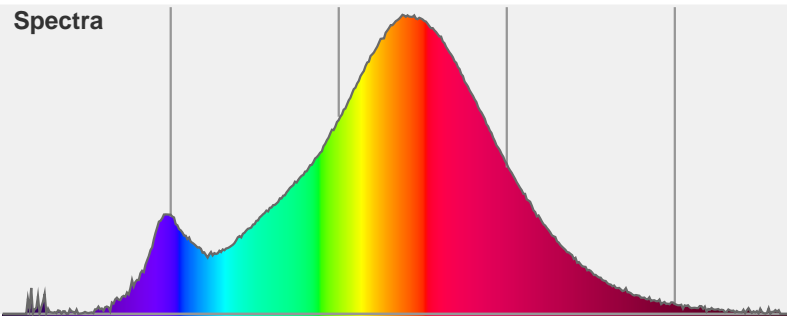
Date and time:
19.6.2015 16:24:23

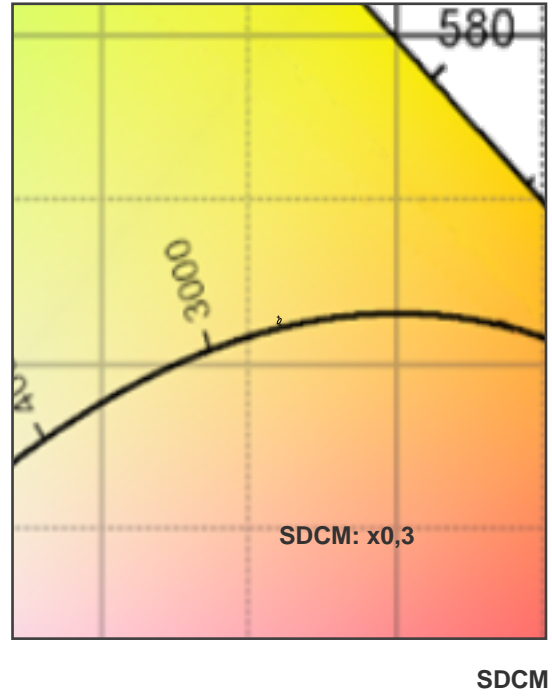
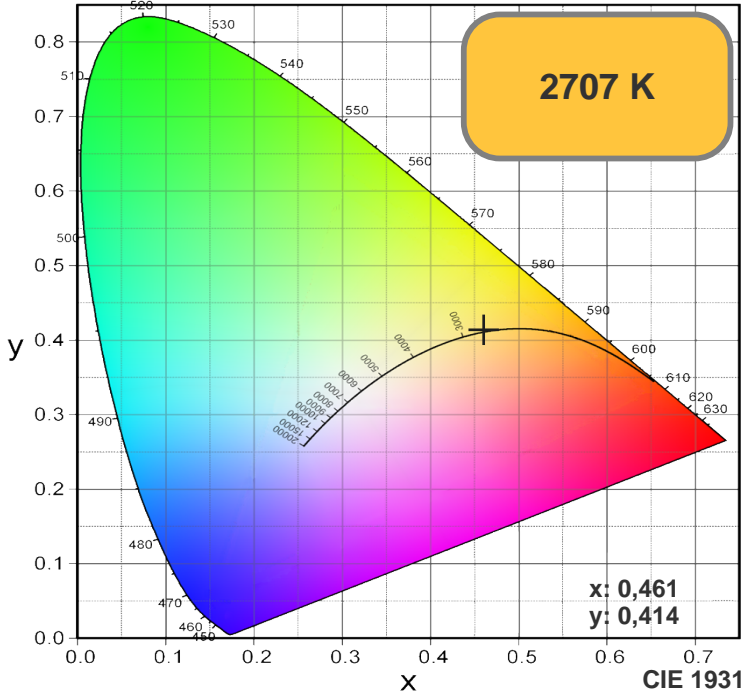
Color



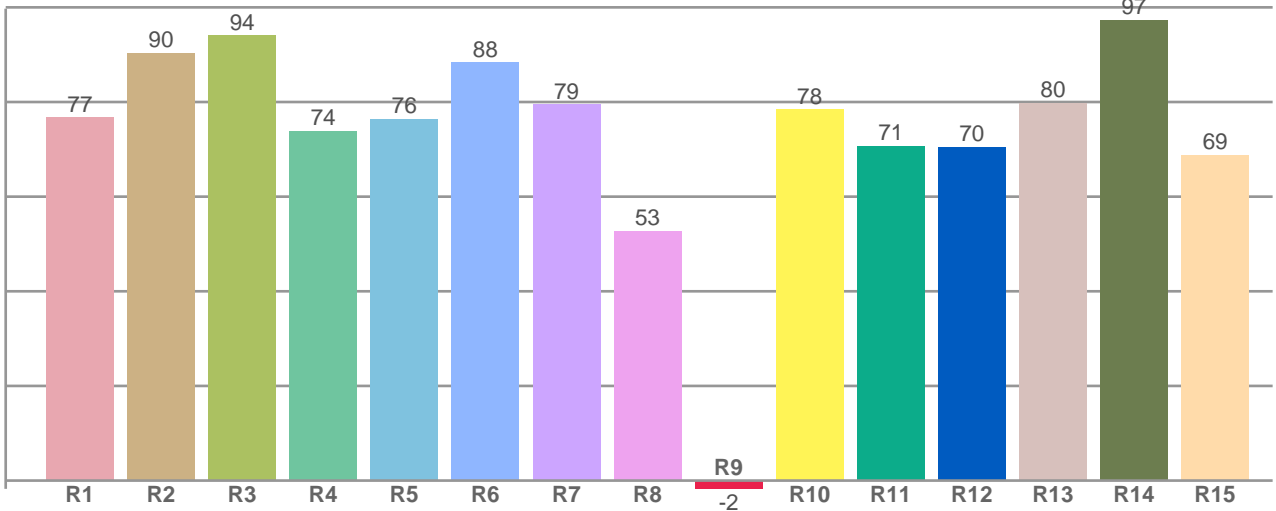
CIE1931
x: 0,461
y: 0,414

Spectra





R1-R8 = CRI: 79,0



R1	R2	R3	R4	R5	R6	R7	R8	R9	R10	R11	R12	R13	R14	R15
76,79	90,39	94,09	73,93	76,49	88,34	79,48	52,71	-1,75	78,41	70,70	70,46	79,83	97,35	68,87

Color parameters

Chromaticity coordinates: $x=0,461$ $y=0,414$ $u'=0,262$ $v'=0,352$
 Color temperature: 2707 Kelvin