



Light efficiency:

101 Lumen/Watt

Light quality:

CRI: 82,2

Color temperature:

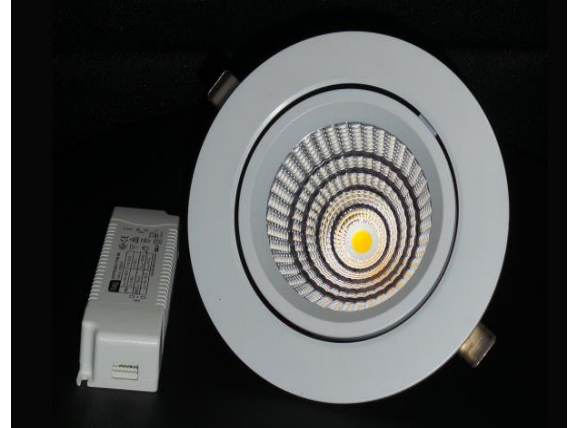
3035 K

Output: 2796 lm

Peak: 9825 cd

Power: 27,6 W

PF: 0,81

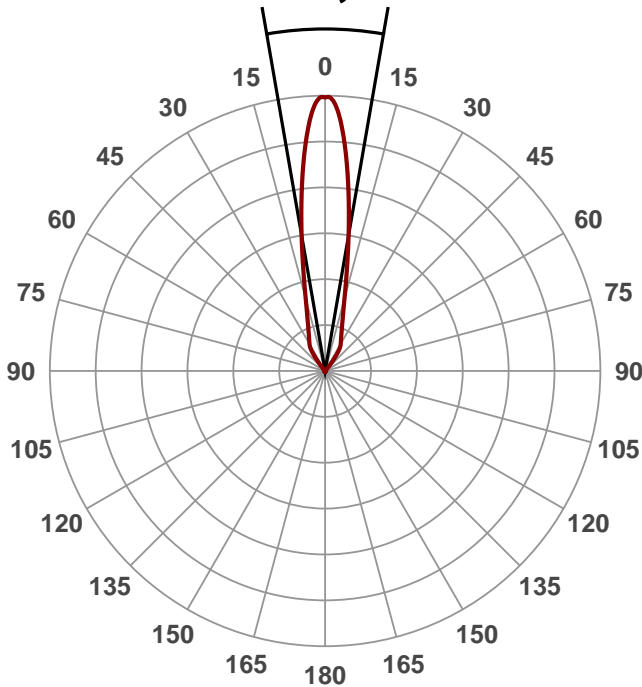


Product name:  
ZLDLA-SL-1528-3020

Date and time:  
1.9.2015 13:05:28

Beam angle

19,7°

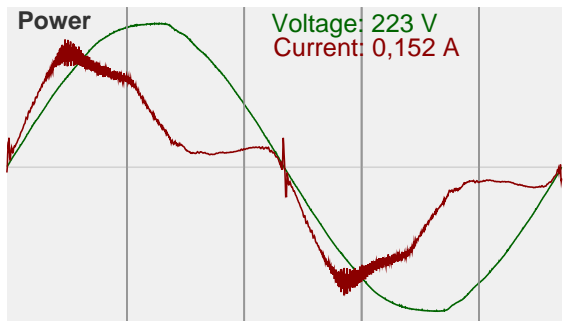
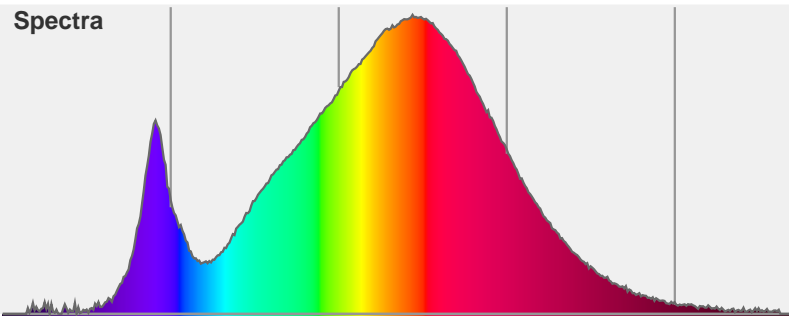


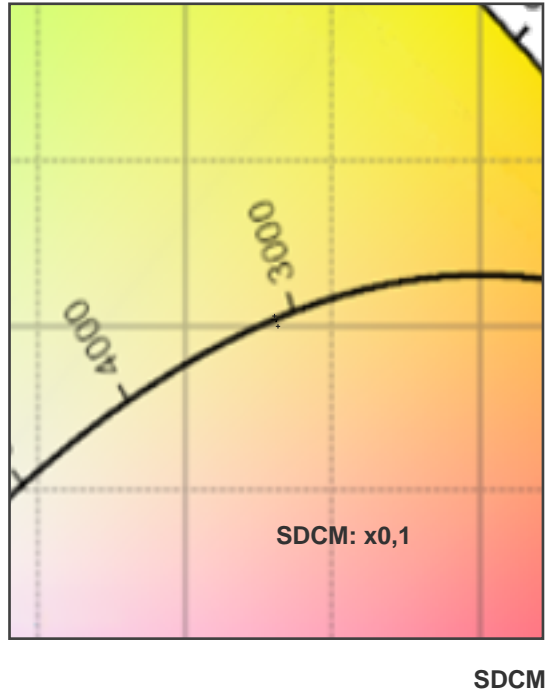
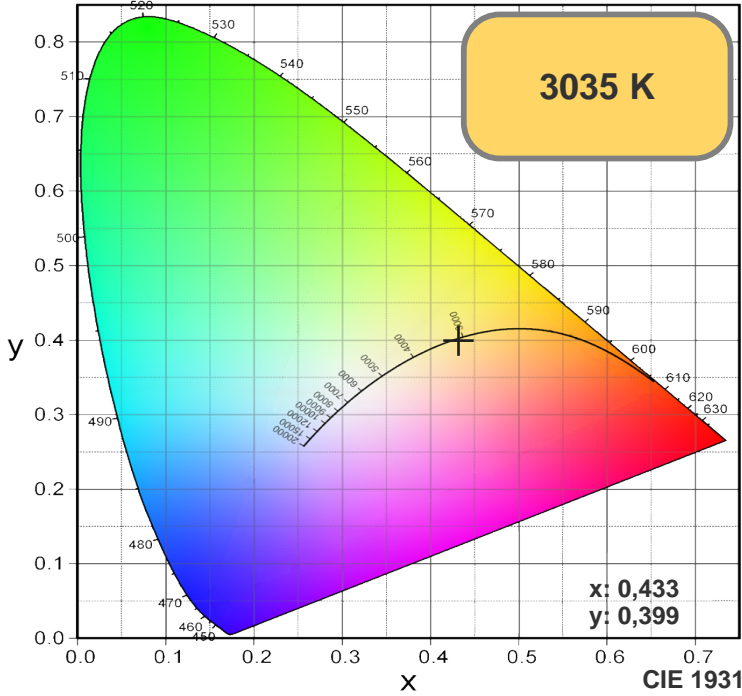
Color



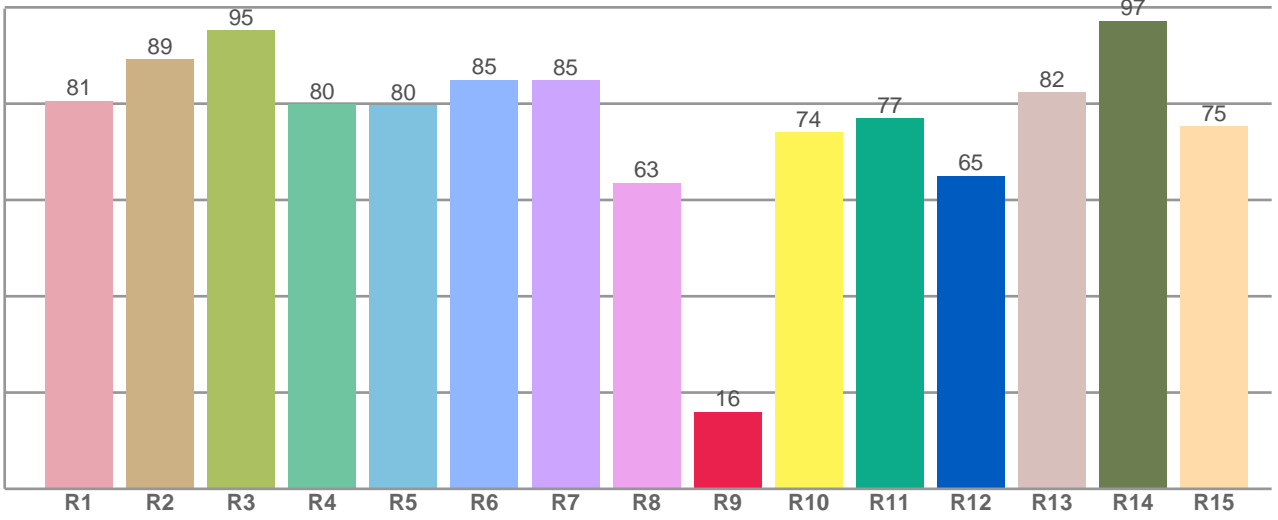
CIE1931  
x: 0,433  
y: 0,399

Spectra





R1-R8 = CRI: 82,2



R1	R2	R3	R4	R5	R6	R7	R8	R9	R10	R11	R12	R13	R14	R15
80,58	89,21	95,23	79,77	79,65	84,91	84,80	63,49	15,94	74,01	76,97	64,94	82,36	97,13	75,20

**Color parameters**

Chromaticity coordinates: x=0,433 y=0,399 u'=0,250 v'=0,346  
Color temperature: 3035 Kelvin