



Light efficiency:



Light quality:



Color temperature:



Output: 1906 lm
Peak: 7434 cd
Power: 24,7 W
PF: 0,94

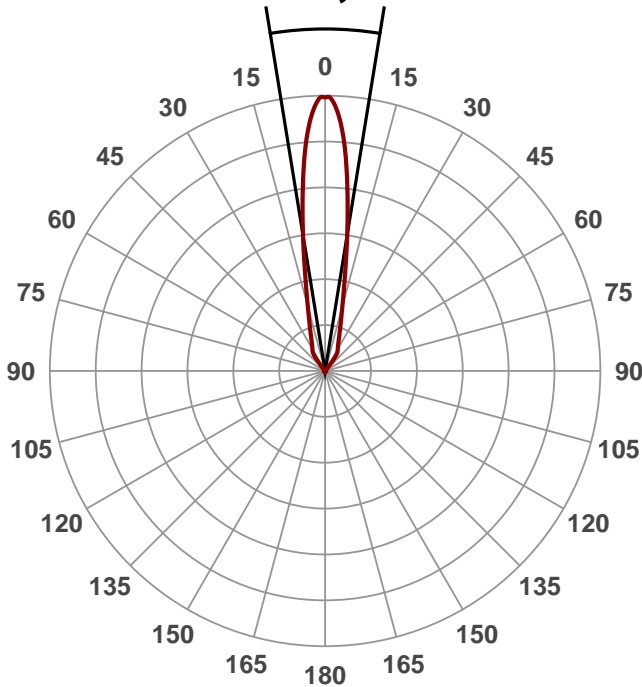


Product name:
ZLDLA-SL-1524-4020

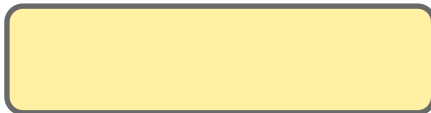
Date and time:
1.9.2015 13:05:10

Beam angle

18,5°

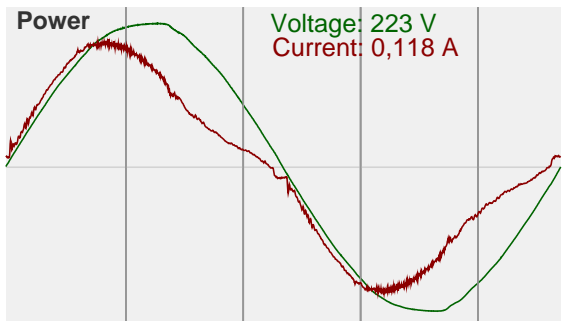
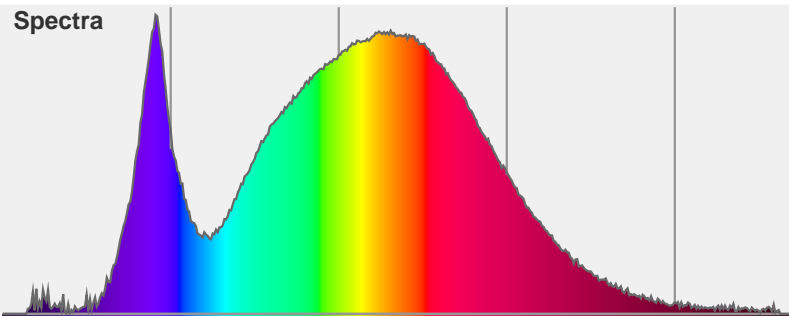


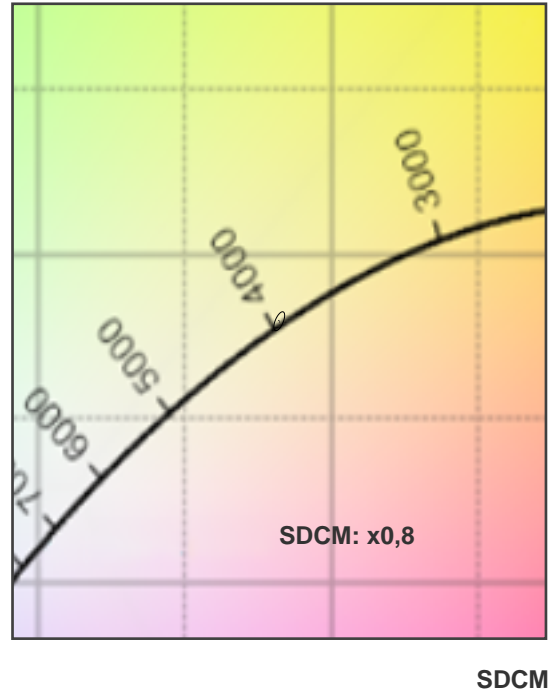
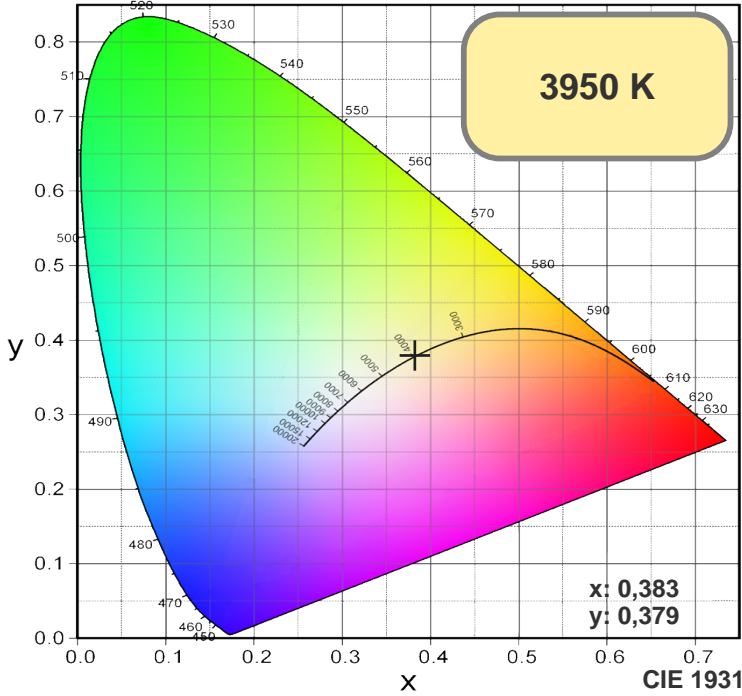
Color



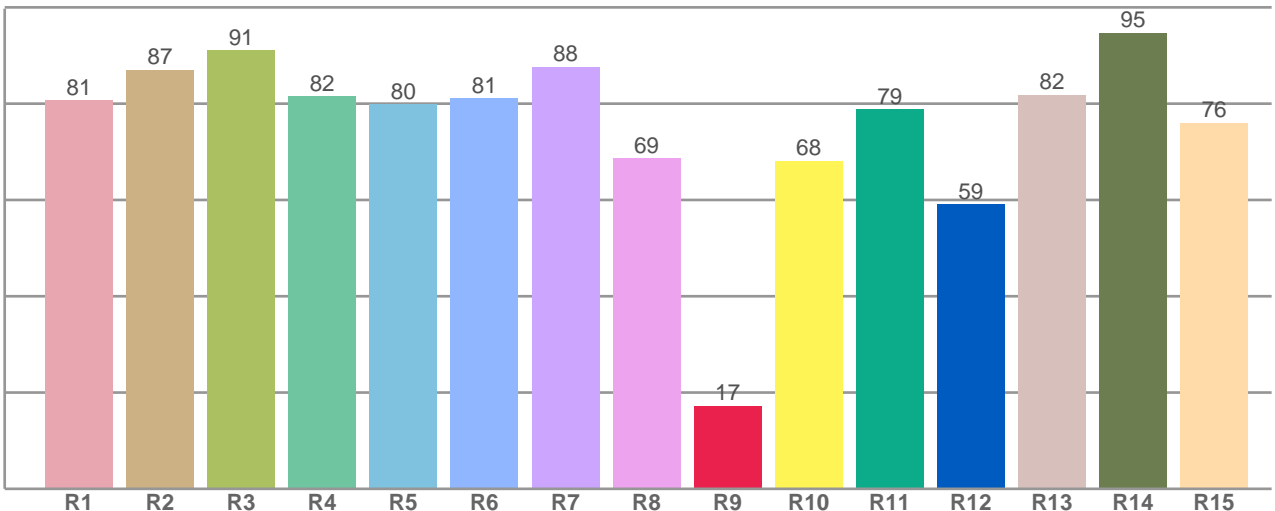
CIE1931
x: 0,383
y: 0,379

Spectra





R1-R8 = CRI: 82,2



R1	R2	R3	R4	R5	R6	R7	R8	R9	R10	R11	R12	R13	R14	R15
80,60	86,95	90,98	81,54	79,87	81,08	87,65	68,66	17,19	68,06	78,78	59,09	81,79	94,70	75,95

Color parameters

Chromaticity coordinates: x=0,383 y=0,379 u'=0,226 v'=0,335
Color temperature: 3950 Kelvin