



Light efficiency:



Light quality:



Color temperature:



Output: 1915 lm
Peak: 12898 cd
Power: 17,9 W
PF: 0,84

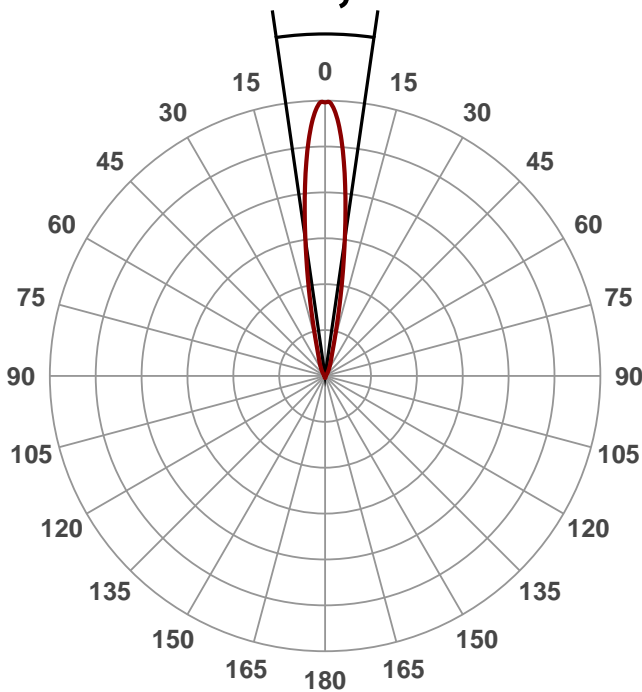


Product name:
ZLDLA-1518-5020

Date and time:
1.9.2015 13:00:19

Beam angle

16,4°

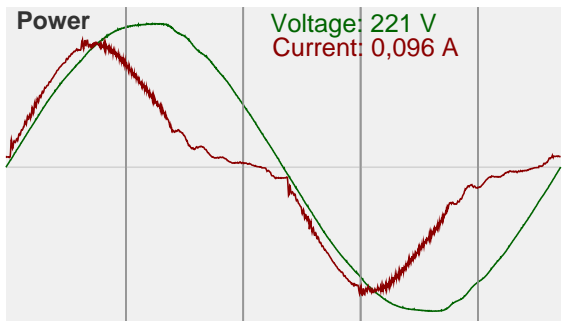
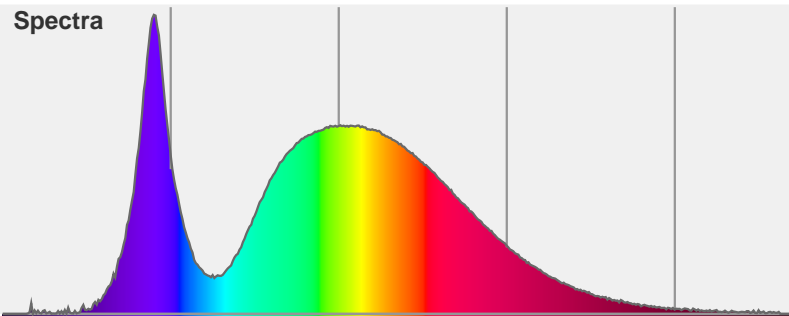


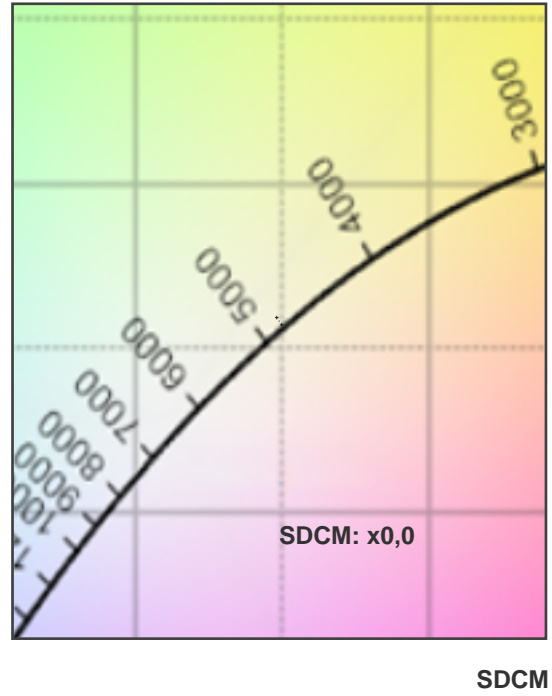
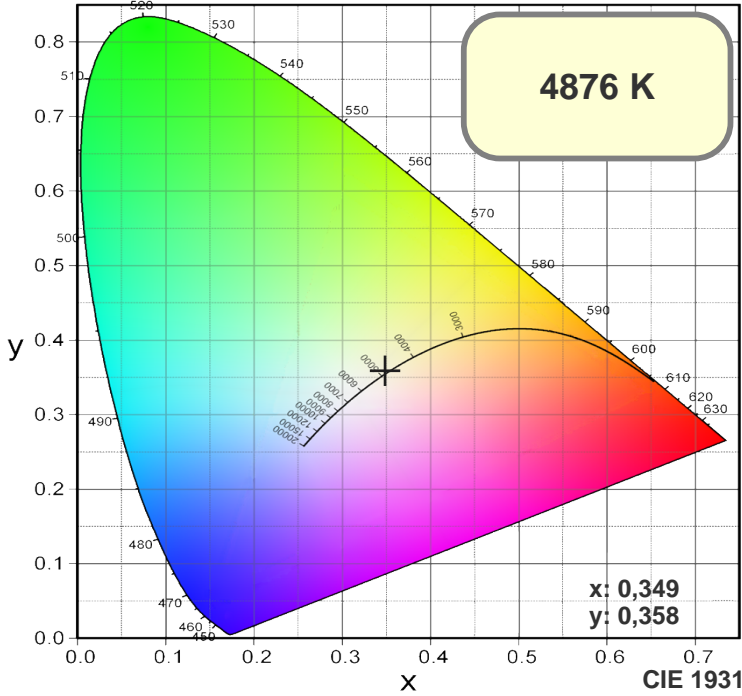
Color



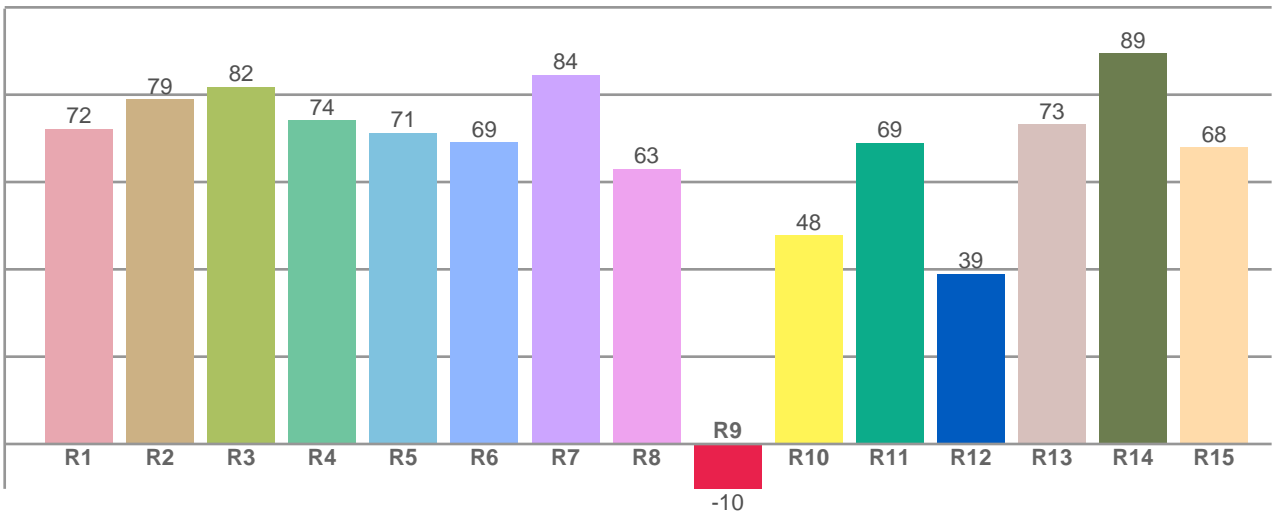
CIE1931
x: 0,349
y: 0,358

Spectra





R1-R8 = CRI: 74,3



R1	R2	R3	R4	R5	R6	R7	R8	R9	R10	R11	R12	R13	R14	R15
72,14	78,91	81,74	74,10	71,19	68,99	84,47	62,95	-10,27	47,70	68,91	38,91	73,15	89,48	67,84

Color parameters

Chromaticity coordinates: $x=0,349$ $y=0,358$ $u'=0,212$ $v'=0,326$
 Color temperature: 4876 Kelvin